



# DOUBLE 4K SKYPORT

Sentera's gimbal-stabilized Double 4K Skyport delivers exceptional agronomic intelligence to the DJI Matrice 300. Powered by DJI Skyport, Double 4K Skyport offers live video and still image download, and full gimbal control.

## VERSATILE & ACCURATE

Agriculture professionals need immediate, accurate crop and field performance information. Double 4K Skyport powered by DJI SKYPORT offers multiple configurations to meet your needs, plus real-time spectral and vision-based status measurements that deliver scouting information to support current workflows. Double 4K Skyport is fully compatible with Sentera FieldAgent analysis, reporting, and API integrations to offer the best combination of connected and connectionless imaging and analytics capabilities.

## FEATURES

- Efficiently capture relevant health indices, variants include RGB, NDVI, NDRE, and nearly a dozen other specialized index products
- Actively scout fields with live-streaming video options
- Quickly integrate with DJI M300 drone series using gimbal technology
- Seamlessly flow data to FieldAgent Web, Mobile, and Desktop platform, generate shapefiles, support prescription development and telematics integration.

ADVANCING PRECISION AGRICULTURE

# DOUBLE 4K SKYPORT

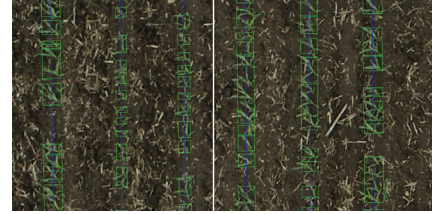
## Installation Options

Sentera's Double 4K Skyport Gimbaled Sensor is powered by DJI SKYPORT, the key to seamless integration with any DJI MATRICE 200 or 300 Series drone, SKYPORT compliance allows for full control of the Double 4K Skyport using DJI Pilot, Sentera FieldAgent, or any compliant flight app.

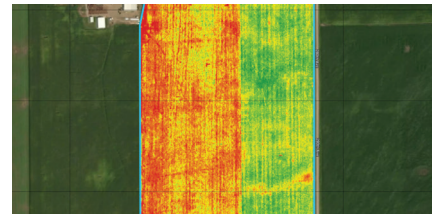


Double 4K Skyport Sensor Mounted on DJI MATRICE 300

## Imagery Capture



Stand Count



NDVI Crop Health



Tassel Count

## Performance Specifications

	NDVI/NDRE	Analytics	Ag+	Multispectral	Weed Mapper
<b>Image Sensors</b>	2X 12MP Rolling Shutter Sony IMX377	2X 12MP Rolling Shutter Sony IMX377	2X 12MP Rolling Shutter Sony IMX377	2X 12MP Rolling Shutter Sony IMX377	2X 12MP Rolling Shutter Sony IMX377
<b>Sensor 1 Spectral Configuration</b>	RED + NIR (NDVI)	Zoom RGB	RGB	Red + Green + Blue	RGB
<b>Sensor 1 HFOV</b>	60	15	60	60	60
<b>Sensor 2 Spectral Configuration</b>	Red Edge + NIR (NDRE)	Red + NIR (NDVI)	Red + NIR (NDVI)	Red Edge + NIR (NDRE)	RGB
<b>Sensor 2 HFOV</b>	60	60	60	60	30
<b>RGB Mapping</b>			✓		✓
<b>NDVI Mapping</b>	✓	✓	✓	✓	
<b>NDRE Mapping</b>	✓			✓	
<b>5 Band Multispectral Mapping</b>				✓	
<b>Yield Estimates</b>		✓	✓		✓
<b>Stand Count</b>		✓	✓		✓
<b>Tassel Count</b>		✓			